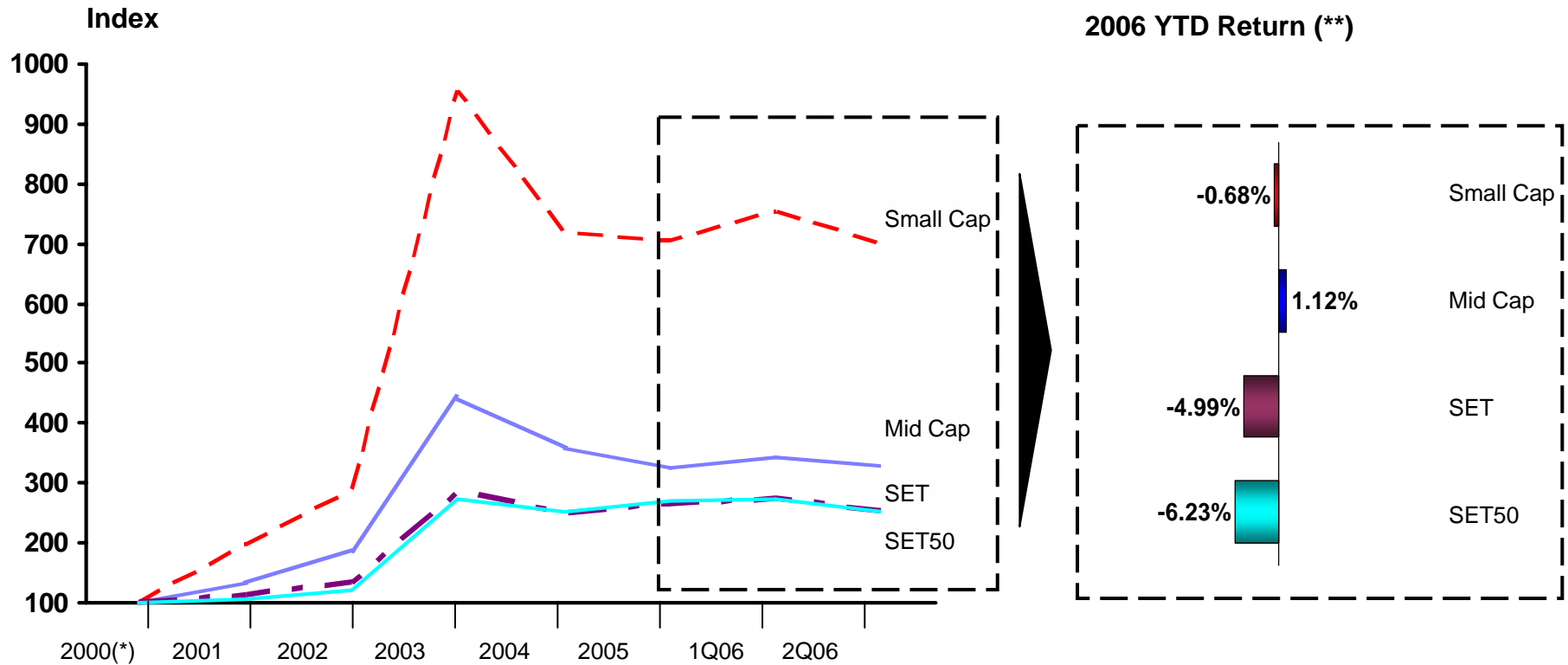


Option 1: SMC Indices are composed by the same stocks as identified in 2000

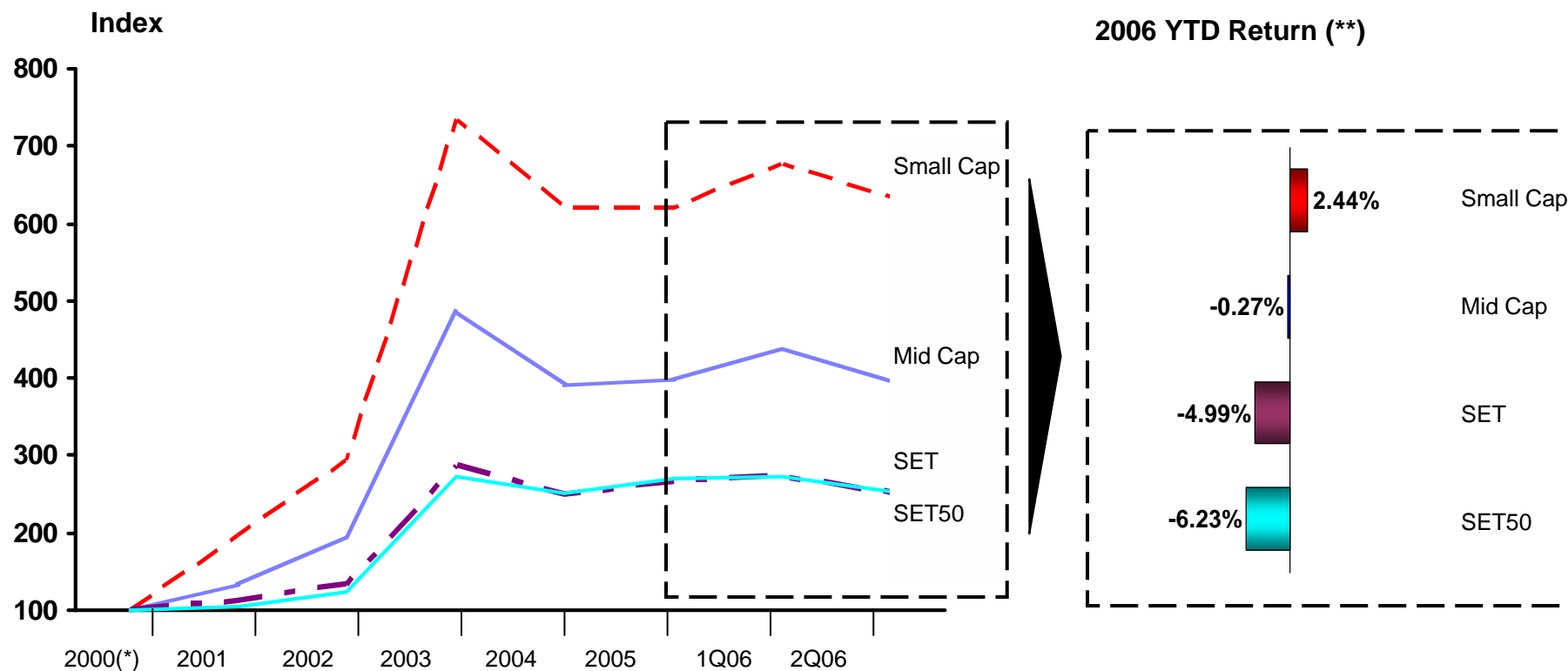


Note:

(*) Base year is 2000 (year end)

(**) 2006 YTD = as of 30th June 2006

Option 2: Stocks in the SMC Indices are renewed every year based on the new market cap values



Note:

(*) Base year is 2000 (year end)

(**) 2006 YTD = as of 30th June 2006